

# ridesafer®

## TRAVEL VEST GEN 6

Use for vests with DOM after 2025/12

**Model Numbers:** JDB14101xxx

**SIZE: SMALL:** For Children 26.5 to 50 lbs. (12 to 22.7 kg) whose height is 34 to 49.2 in. (86 - 125 cm) Minimum age 2 years old.



- Keep this manual for future use.
- Store in pocket located on right front panel of vest.

<https://ridesafer.net/>

S10-151-01-06

**Registration Information:**

Child restraints can be recalled for a variety of safety reasons. You must register this restraint to be reached in a recall. Please register your child restraint by filling out and sending the postage-paid registration card that came with your child restraint.

**Mail to:**

Safe Traffic System, Inc.  
10201 Pacific Ave., Franklin Park, IL 60131 USA  
or call +01-847-233-0365 or fax +01-847-233-0384  
or register online at <http://ridesafer.net/product-registration/>

For recall information, call the U.S. Government's Vehicle Safety Hotline at 1-888-327-4236 (TTY: 1-800-424-9153), or go to [www.NHTSA.gov](http://www.NHTSA.gov).

Or call Safe Traffic System, Inc. at +01-847-233-0365  
Log onto <https://ridesafer.net/>

**Manufactured and Distributed By:**

Safe Traffic System, Inc.  
10201 Pacific Ave., Franklin Park, IL 60131 USA  
© Safe Traffic System, Inc.  
U.S. Pat. 6,902,193 B2 & US 10,661,749B2  
Made in Vietnam

### ⚠️ WARNING ⚠️ DEATH or SERIOUS INJURY can occur

- Failure to follow these instructions and vest labels may result in the child striking the vehicle's interior during a sudden stop or crash.
  - DO NOT allow children less than 2 years old to use this child restraint.
  - Use only for children who weigh between 26.5 to 50 lbs. (12 to 22.7 kg).
  - Snugly adjust the vest and vehicle seat belts around the child. Refer to the seat belt adjustment instructions in the vehicle owner's manual.
  - A snug strap should not allow any slack. It lies in a relatively straight line without sagging. It does not press on the child's flesh or push the child's body into an unnatural position.
  - Always position and snugly adjust the lap belt first, then snugly adjust the tether or shoulder belt. The lap belt must be positioned low on the hips, contacting the thighs, not the abdomen.
- LAP BELT ONLY USE:**
- Use of tether and crotch strap is always required when securing child with only a lap belt.
  - If a tether anchor is not available in the seating location selected, secure the child with a lap and shoulder belt or contact Safe Traffic System for further information.
  - NEVER use only a lap belt without the tether and crotch strap or without a shoulder belt.
- LAP AND SHOULDER BELT USE:**
- The shoulder belt must always be positioned on the child's shoulder—never under the arm or behind the back.
  - Use the tether and crotch strap whenever possible.
  - For the best protection for children between 2 and 3 years old, use this vest together with the TravelSmarter® Booster Seat.
  - Follow all instructions in this manual and the labels on the child restraint.
  - Register your child restraint with the manufacturer online or by postage-paid registration card.
  - DO NOT use the vest, tether, or crotch strap after a crash unless all conditions for reuse are met as outlined in the "Re-use After a Crash" section.

### SAFETY CHECK LIST

- Read and understand instruction manual and vest labels.
  - Child is at least 2 years of age and weighs at least 26.5 lbs (12 kg).
  - Lap belt must be low on hips, contacting thighs, not on abdomen.
- LAP ONLY SEAT BELT USE:**
- Position and snugly adjust lap belt, then adjust tether or shoulder belt.
  - Tether and crotch strap are ALWAYS REQUIRED.
- LAP and SHOULDER BELT USE:**
- Position and snugly adjust lap belt and then shoulder belt.
  - Never put shoulder belt under child's arm or behind child.
  - Use the tether and crotch strap whenever possible.
  - Secure child in back seat whenever possible.
  - Top of child's ears must be below top of vehicle seat back.
  - Never leave child unattended.
  - Discontinue use when child's weight exceeds 50 pounds (22.7 kg).
  - Do not allow anyone (babysitter, relatives, etc.) to use travel vest without first understanding all instructions.
  - Add-on child restraint systems should be securely belted to the vehicle, even when they are not occupied, since in a crash an unsecured child restraint system may injure other occupants.
  - Discontinue use after 5 years from the date of purchase.

### HEIGHT & WEIGHT INFORMATION

**Requirements for use:**

- Minimum age: 2 years old.
- Weight between 26.5 to 50 lbs. (12 to 22.7 kg).
- Height between 34 to 49.2 in. (86 to 125 cm)
- Top of child's ears must be below top of vehicle seat back.

**Fit of vest on child:**

- The vest must be adjusted to fit snugly around the child's chest.
- Bottom front flap of vest must be flat on the thighs of the child.

**Discontinue use when:**

- Vest is too small to fit around child's chest and waist.
- Lower front panels do not lie flat on top of child's thighs when seated.
- Child's weight exceeds 50 pounds (22.7 kg).



Use with Lap Belt and Tether



Use with tether, lap and shoulder belt

## SELECTING A VEHICLE SEATING LOCATION

The RideSafer® Travel Vest is designed for use in forward facing seating positions in passenger cars, sport utility vehicles (SUVs), crossover utility vehicles (CUVs), and light duty trucks equipped with either a vehicle lap belt and tether anchor (tether MUST be used) or vehicle lap and shoulder belt (use of tether is highly recommended whenever possible).

How you use the vest depends on the vehicle seat location used, the vehicle seat belt system and availability of a tether anchor in the vehicle.

- Refer to vehicle owner's manual for the type of vehicle seat belts and availability of tether anchors. If the vehicle does not have a tether anchor in a seating location, secure with a lap and shoulder belt or a tether anchor may be able to be added. Refer to vehicle owner's manual or contact vehicle dealer.
- Refer to the vehicle owner's manual for information on securing children and vehicle seat belt use.

Review and follow the information below before using.

### Seating Locations:

According to accident statistics, children are safer when properly restrained in the rear seating positions rather than in the front seating positions.

**Seating Locations That Can Not be Used**

**1. Low vehicle seat back.**

- Do not use seating locations in which the top of vehicle seat back is below top of child's ears.



**2. Seats facing side or rear.**

- DO NOT use seating locations that face the rear or sides of the vehicle.



Side Facing Vehicle Seats



Rear Facing Vehicle Seats

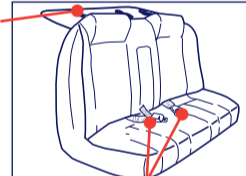
### Vehicle Seat Belts:

**1. Lap Belts:**

**Vehicle Seating Locations With Only A Lap Belt:**

- A seating location with only a vehicle lap belt must also have a tether anchor.
- DO NOT use a seating position with a lap-only seat belt that does not have a tether anchor until a tether anchor has been installed.
- Contact Safe Traffic System if further information is needed.

Tether Anchor



Lap Belt Only

**2. Passive Restraint Systems:**

**Motorized Shoulder Belts:**

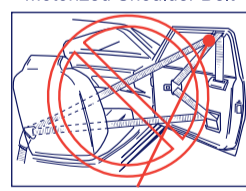
- DO NOT use seating locations with motorized shoulder belts.



Motorized Shoulder Belt

**Door Mounted Lap And Shoulder Belt:**

- DO NOT use seating locations where seat belts are mounted to the door.



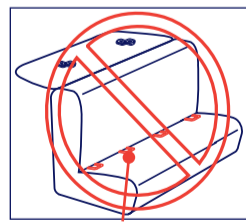
Belts Mounted To Front Door

**3. Child Restraint Anchorage System/LATCH**

- DO NOT use the lower anchors of the vehicle child restraint anchorage system/LATCH with this vest.

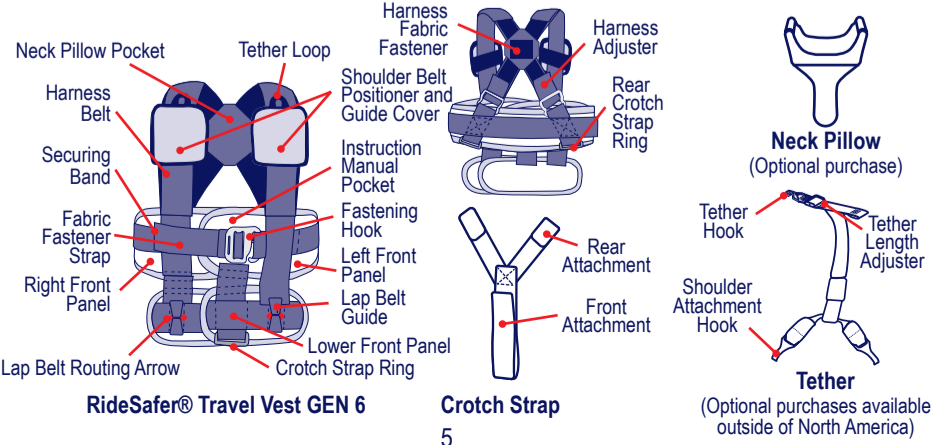
**⚠️ WARNING ⚠️**

**Avoid serious injury or death: DO NOT use vest with vehicle lower anchors for the Child Restraint Anchorage System or LATCH System.**



Lower Anchor

## RIDESAFER TRAVEL VEST & PARTS



RideSafer® Travel Vest GEN 6

Crotch Strap

Tether (Optional purchases available outside of North America)

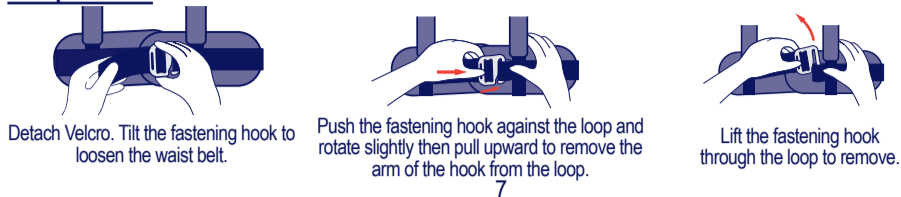
## SECURING VEST ON CHILD

• This vest is designed for use with children who weigh between 26.5 to 50 lbs (12 to 22.7 kg) and are at least 2 years of age.

### ⚠ WARNING ⚠

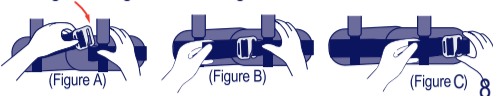
- Snugly adjust vest around child.
- Discontinue use of the vest when:
  - Vest is too small to fit around child's chest and waist.
  - Lower front panels do not lie flat and contact child's thighs when seated.

#### To Open Vest:



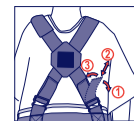
#### Place Vest On Child:

- To lengthen belt: pull the fastening hook out of the loop.
- Place vest behind child's back and insert child's arms through arm openings of vest.
- Close vest by placing left front panel over right front panel.
- Insert the fastening hook into the loop. (Figure A)
- Pull the adjustable belt snug and lock with Velcro to secure the fastening hook. (Figure B)
- If the child's hip size is smaller than the standard, it can be attached to the loop on the side of the front panel as shown in figure C.
- Attach the crotch strap to the front crotch strap ring, route the belt between the child's legs. Attach the 2 rear loops to the rear crotch strap rings by opening the Velcro, feeding the webbing through the rings and securing the Velcro closed.



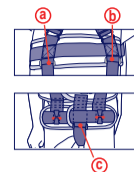
#### To Adjust Harness Height:

Disengage harness fabric fastener on back of vest ①, adjust length of harness belts as needed ②, and secure harness belts with fabric fasteners ③.



#### To Attach the Crotch Strap:

1. Open fabric fastener on all 3 ends.
2. Thread the 2 rear straps through plastic ring (a) then ring (b) on the back of the vest, then close Velcro.
3. Pass strap between child's legs.
4. Attach to ring (c) on the front bottom flap.



## SECURING CHILD IN VEHICLE

### ⚠ WARNING ⚠ DEATH or SERIOUS INJURY can occur

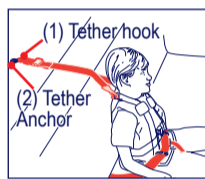
- To avoid injury, this restraint, vehicle belts, and tether should be secured and adjusted by an adult.
- NEVER allow child to buckle or adjust belts.
- Snugly adjust the vehicle seat belt around child and vest according to the instructions in the vehicle owner's manual.
  - Vehicle lap belt must be low on hips and flat, contacting the child's thighs. An improperly positioned vehicle lap belt can cause serious abdominal injury or death.
  - Do not allow child to slide down in vehicle seat which could position vehicle lap belt across child's abdomen or shoulder belt over neck or face.
  - Vehicle belts MUST be flat against child and MUST NOT be twisted.

### Securing Child With Tether and Lap Belt

### ⚠ WARNING ⚠ DEATH or SERIOUS INJURY can occur

- NEVER use with lap belt only without the tether attached to vest and vehicle tether anchor.
- Always use tether and crotch belt.
- Position and snugly adjust lap belt, then attach and snugly adjust tether.
- DO NOT over tighten tether. Over tightening the tether can raise the vehicle lap belt up on child's abdomen exposing the child to the risk of abdominal injury in a crash.
- Only use the tether provided with this travel vest. Do NOT use tether with other products.

1. Locate end of tether with tether hook and tether length adjuster. Attach the tether hook (1) onto the vehicle tether anchor (2) located behind the seating location where a child will be seated.
2. Position child on vehicle seat with child's bottom and back against vehicle seat back cushion.
3. Route lap belt through both lap belt guides on lower front panels and over child's thighs. Snugly adjust lap belt. Lap belt MUST contact thighs, should not be positioned up on abdomen.
4. Attach the two shoulder attachment hooks on the free end of the tether strap, to the tether loops located at the top of the shoulders.
5. Snugly adjust tether to remove all slack. DO NOT over tighten.
6. Check that vehicle lap belt is low on child's hips, touching the top of the thighs. If vehicle lap belt is not low on the hips, touching the top of the thighs, loosen tether, retighten vehicle lap belt, and then snugly adjust tether again.



Lap Belt and Tether

#### To remove child from tether and lap belt:

1. Loosen top tether and unhook shoulder attachment hooks from both shoulders.
2. Unbuckle vehicle seat belt and remove lap belt from lap belt guides on lower front panels of vest.

Note: Remove tether from vehicle tether anchor if changing seat position or moving to another vehicle.

9

## RE-USE AFTER A CRASH

### ⚠ WARNING ⚠ DEATH or SERIOUS INJURY can occur

- DO NOT allow any use of this child restraint after a crash unless crash and child restraint meet ALL conditions in this "Re-use After A Crash" section. Do not sell or allow others to use a child restraint that has been in a crash and does not comply with ALL of these conditions.
- This child restraint must be destroyed and replaced if it does not comply with ALL conditions defined by the NHTSA and Safe Traffic System.

Child restraints are often damaged in vehicle crashes and in many cases, the child restraint must be destroyed and replaced. However, the National Highway Traffic Safety Administration (NHTSA) and Safe Traffic System advise that if a child restraint has been used in a minor crash that the child restraint can continue to be used with your child if the crash, vest and tether meet all of the conditions listed on both the NHTSA and Safe Traffic System websites.

The materials used to construct the RideSafer® Travel Vest and tether are designed to deform and absorb energy during a crash. The vest must be fully inspected after a minor crash to identify which components need to be replaced. This information can be found on the Safe Traffic System website.

For NHTSA information on car seat re-use after a crash, check the NHTSA website at: <https://www.nhtsa.gov/car-seats-and-booster-seats/car-seat-use-after-crash>

For additional information from Safe Traffic System on re-use of the RideSafer® after a crash and for replacement parts, check the Safe Traffic System website at: [www.ridesafer.net/faqs](http://www.ridesafer.net/faqs)

Damage to child restraints may be difficult to see or it may be difficult to verify the damage to the child restraint. For those situations where any of the NHTSA Child Restraint Re-Use criteria have not been met, or if there is uncertainty whether damage to the child restraint has occurred, NHTSA and Safe Traffic System advise parents or caregivers to contact their automobile insurance company regarding its policy on replacement of child restraints. Using any child restraint when uncertain if it is damaged puts your child at risk for injury or death.

## CERTIFICATION

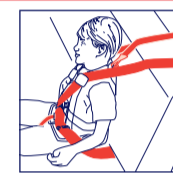
- **Motor Vehicle** – This child restraint conforms to all applicable Federal Motor Vehicle Safety Standards when installed with a lap belt only and tether.
- **Aircraft** - This restraint is not certified for aircraft use, because aircraft seats do not have a tether anchor or shoulder belt that are needed for a safe install.
- **ONLY use the TravelSmarter® Booster Seat if the child needs to be elevated on a booster seat.**

## Securing Child With Vehicle Lap and Shoulder Belt

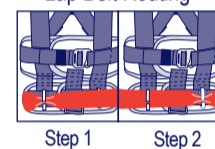
### ⚠ WARNING ⚠ DEATH or SERIOUS INJURY can occur

- Use in this mode only with the vehicle's lap and shoulder belt. DO NOT use with a lap belt only or lower anchors of the Child Restraint Anchorage System.
- Position and snugly adjust lap belt, then position and adjust shoulder belt.
  - Lap belt must be low on hips, flat and contacting thighs.
  - Shoulder belt must be centered over shoulder (NOT up on neck or low, off shoulder).
  - Do not use shoulder belt that is loose, positioned under child's arms, or behind child.

1. Position child on vehicle seat with child's bottom against vehicle seat back cushion.
2. Route the vehicle lap belt through the lap belt guides on the lower front panels as shown in steps 1 and 2. Snugly adjust the lap belt.
  - Lap belt MUST be low on hips and contacting thighs.
  - The lap belt should NOT be on the abdomen.
3. Open the shoulder belt guide cover.
4. Snugly adjust shoulder belt and slide shoulder belt under the tabs of the shoulder belt guide, as shown in step 3.
  - Refer to the vehicle owner's manual for instructions on use and adjustment of the vehicle lap and shoulder belt.
5. Check position of the shoulder belt.
  - Shoulder belt should be in contact with the child's chest.
  - Shoulder belt should be centered on child's shoulder.
  - Shoulder belt should NOT be contacting the child's neck, face or be off the shoulder on the arm.
  - To relocate the shoulder belt, slide the shoulder belt guide up or down, then retighten the shoulder belt to be snug.
  - Recheck the position of the shoulder belt. If the shoulder belt cannot be centered on the child's shoulder, move the child to another seating location.
6. Close the shoulder belt guide cover as shown in step 4.
7. Attach the tether to the vest by placing the shoulder attachment hooks onto each tether loop on the shoulders, then attach the tether to the tether anchor directly behind the child's seating position and snugly adjust.

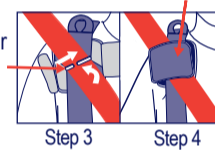


#### Lap Belt Routing



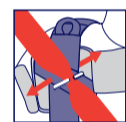
Step 1 Step 2

#### Shoulder Belt Positioner and Guide Cover



Step 3 Step 4

Shoulder Belt Guide



Pinch and Pull Out

#### To remove child from lap and shoulder belt:

1. Open shoulder belt guide cover and remove shoulder belt from shoulder belt guide.
2. Unlock and remove vehicle lap belt from lap belt guides on lower front panels of vest.

Note: When removing belt, pinch the belt and pull out.

3. Loosen tether and unhook shoulder attachment hooks from both shoulders.

Note: Remove tether from vehicle tether anchor if changing seat position or moving to another vehicle.

10

## ADDITIONAL INFORMATION

#### Tether and Tether Anchor Information:

Use of the tether and crotch strap is always required with a lap-only seat belt.

Use of the tether is recommended with lap and shoulder belt.

The tether hook on the tether that is provided with this child restraint is marked with a tether symbol, as shown in the figure on the right.

- You should look for a corresponding symbol in your vehicle to locate a tether anchor to attach the tether hook.
- See your vehicle owner's manual for more information on the child restraint anchorage system and location of the tether anchors in your vehicles.

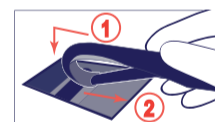


Fig 1

Tether Attachment: Secure Tether Hook ① to vehicle Tether Anchor ② and extend the length or remove slack from the tether strap as needed (see Fig. 1).

Tether Removal: Loosen tether strap and depress retainer spring ① and unhook tether hook ② from vehicle tether anchor (see Fig. 2)

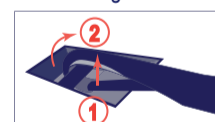


Fig 2

### ⚠ WARNING ⚠ DEATH or SERIOUS INJURY can occur

Always follow directions of RideSafer® Travel Vest to avoid any injury by impact in case of sudden stop or crash.

**Emergency Escape - Removing Vest:** Step 1 – Unbuckle vehicle seat belt. Step 2 – Remove crotch strap from front ring. Step 3 – Open front panel of vest. Step 4 – Have child remove their arms from vest and exit the vehicle.

**Emergency Escape – Exiting With Vest On:** Step 1 – Unbuckle vehicle seat belt. Step 2 – Loosen tether and remove shoulder attachment hooks from both shoulders. Step 3 – Exit the vehicle wearing the vest.

#### Warm Weather:

- Some of the metal vest parts can get very hot in the sun or warm weather. To avoid burns, always check before putting child in the vest.

#### Instruction Manual Storage:

- Store instruction manual in pocket on the inside of the right front panel of the vest.

#### Care And Cleaning:

- **Vest:** Spot clean with mild soap and water Air Dry. Or machine wash (vest only) in laundry bag with gentle detergent. Air Dry. Go to [ridesafer.net/FAQ](http://ridesafer.net/FAQ) for detail.
- **Locking Device:** Rinse with warm water. DO NOT use household detergents.
- **Tether:** Surface wash with mild solution of soap and water. Air Dry.
- **Crotch Belt:** Surface wash with mild solution of soap and water. Air Dry.

#### Minor Cosmetic Changes:

Safe Traffic System may make some minor cosmetic changes in the RideSafer Travel Vest from product literature or other products with the same model number. The use, installation, and certification for safety and performance remain identical across all versions.

**Expiration date:** DO NOT USE after 5 years from date of purchase.